

SOLSTA FDC (FLEXIBLE DILUTION CONTROL)

321070 (Action Gap) and 321071 (Air Gap)



OVERVIEW

The SOLSTA FDC dispenser is designed to quickly change out SOLSTA products and to reduce the time spent setting up new chemicals. It features a one hand fill for spray bottles and a 7ft remote fill gun for bucket fill applications.

WARNINGS



All installations must conform to local plumbing codes and use approved backflow prevention devices. A pressure indicating tee is to be installed with existing faucets according to local plumbing codes in the state of Wisconsin and any other state that requires the use of a pressure indicating tee.



ALWAYS WEAR PROTECTIVE CLOTHING AND EYEWEAR WHEN WORKING WITH CHEMICAL PRODUCTS.

*ALWAYS TURN OFF WATER SUPPLY AFTER USE AND DISCONNECT

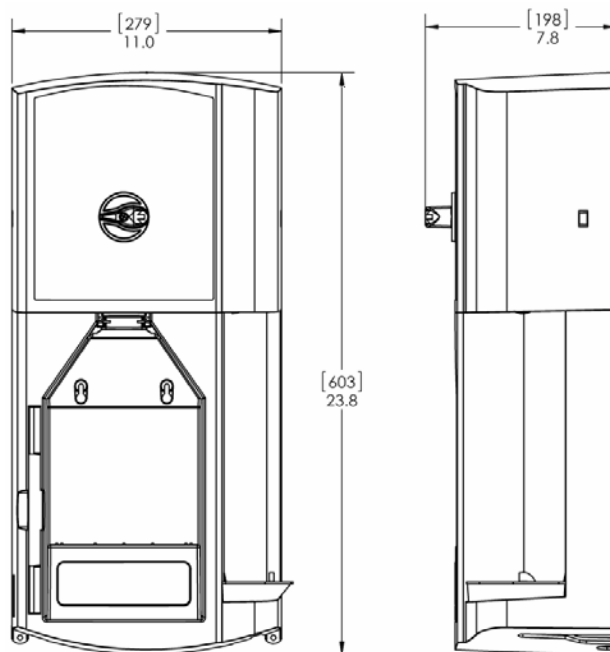
SPECIFICATIONS

Water Supply Requirements

	Minimum	Maximum
Water Pressure	20 psi (1.38 bar)	125 psi (8.62 bar)
Water Temperature	-	150°F

** Recommended water pressure is between 30 psi (2.07 bar) and 80 psi (5.52 bar). If pressure exceeds 80 psi, it is recommended that a 60.18 regulator is used.

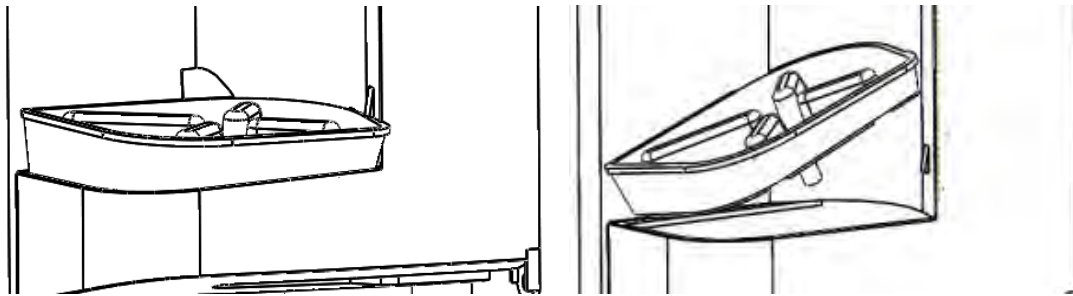
OVERALL SIZE AND WEIGHT



Weight: 10 lb. (4.53 kg.)

INSTALLATION

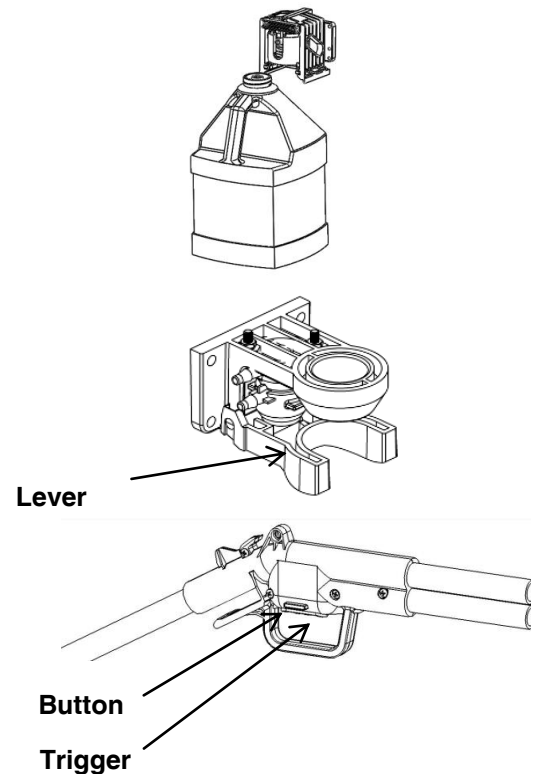
1. Position the dispenser on the wall and mark the 4 screw locations. Use mounting template supplied with this instruction sheet to double check holes and to level dispenser.
2. Install the supplied anchors in the wall.
3. Mount the dispenser to the wall with the supplied screws.
4. Install SOLSTA chemical container in the dispenser by pushing the chemical until the docking station engages the top of the bottle.
5. Install Drip Tray by tilting the front end down and snapping in the back end as seen below.
6. If you want to install a drain line on the drip tray, you must drill a 1/8" hole through the drip tray. Use the barb as the guide for your hole. Once drilled, attach drain line to the drip tray.



OPERATION

To begin the operation of the dispenser, you must first install the SOLSTA chemical.

- Push the bottle in until the docking station engages the bottle. The docking station will lock the bottle in place when the bottle is fully engaged.
- Once the bottle is fully engaged, you can either use the Bottle fill mechanism or the Remote Gun assembly to dispense chemical.
- To dispense with the Bottle fill feature, Push the bottle up until the lever activates the valve. Once you are finished, lower the bottle until the lever falls and deactivates the valve.
- To dispense with the Remote fill feature, squeeze the trigger and release it when finished. For continuous flow, keep the trigger depressed and slide the button over. When finished, depress trigger to disengage continuous flow. Once finished dispensing, hang the gun on the side of the cabinet in the appropriate slot.
- To change out product, simply pull the bottle away from the dispenser.
- ***ALWAYS TURN OFF WATER SUPPLY AFTER USE AND DISCONNECT**



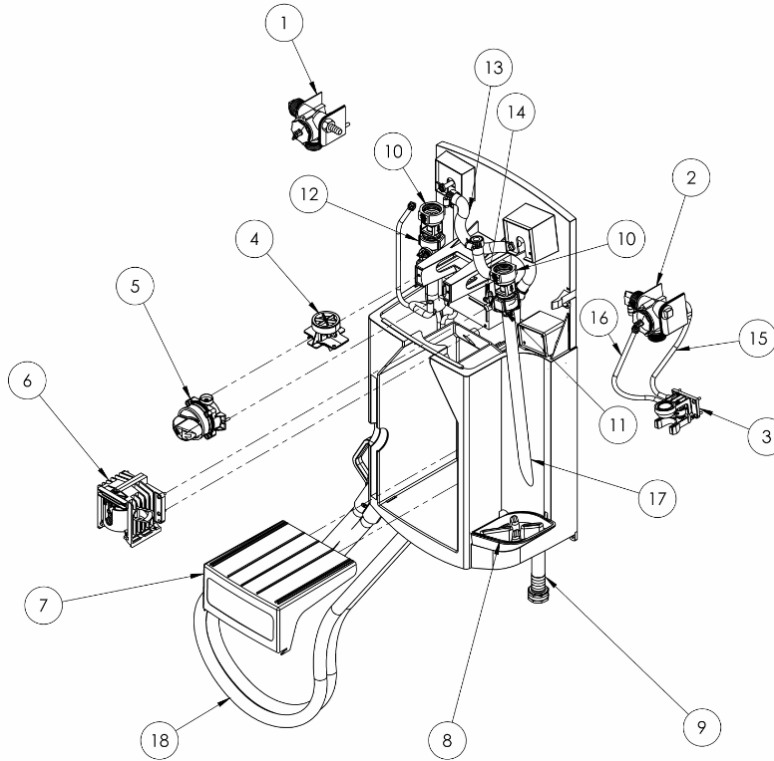
TROUBLESHOOTING

Symptom	Probable Cause	Remedy
Proportioner fails to draw chemical properly.	1. Insufficient water supply pressure.	1. 20 PSI is the minimum allowable pressure.
Water valve is not shutting off completely.	<ol style="list-style-type: none"> 1. "Sliding lever" return spring may be missing on Remote fill gun. 2. "Sliding lever" is not returning all the way down due to interference between the sliding lever and either the chemical supply and/or outlet tubing. 3. Bucket fill outlet hose is catching the bottom edge of the sliding lever during normal usage. 4. Bottle fill valve will not shutoff. 	<ol style="list-style-type: none"> 1. Remove cover and visually check for sliding lever return spring. Replace if missing. 2. Remove cover and visually check for any tubes rubbing the sliding lever. Routing of chemical supply and outlet tubing must not restrict the movement of the sliding lever. Reroute tubing. 3. Don't pull the bucket fill outlet hose too tight from either side otherwise sliding lever may not return properly. 4. Make sure bottle fill hose is not pressed against the lever
Water valve is leaking.	1. Barbed nut is too loose.	1. Shut water supply off first. Hand-tighten the barbed nut. Do not over tighten w/tool.
Threaded connections are leaking water.	<ol style="list-style-type: none"> 1. The connection between the blend center and water supply line is too loose or rubber washer is missing. 2. Backflow prevention devices and/or proportioners are too loose. 	<ol style="list-style-type: none"> 1. Shut water supply off first. Carefully tighten the female hose coupling on the blend center to the inlet water supply line. Do not over tighten. 2. Tighten loose connection(s) with tools if necessary. Do not over tighten if using tools.
Chemical is not draining back into chemical container.	1. Vent assembly is sticking.	1. Replace vent assembly.

DILUTION CHART

Description	Item #	Primary	Primary		Secondary	
			Ratio	oz/gal	Ratio	oz/gal
110 HD Degreaser	4100989	Bottle	32:1	4	64:1	2
120 XHD Degreaser	410099	Bottle	32:1	4	64:1	2
143 WAXIE-Green Cleaner/Degreaser	410056	Bucket	64:1	2	32:1	4
200 General Purpose Cleaner	320100	Bottle	32:1	4	64:1	2
210 Neutral Cleaner	320200	Bucket	128:1	1	64:1	2
230 Floor Stripper	320806	Bucket	12:1	10.7	8:1	16
243 WAXIE-Green Neutral Cleaner	320007	Bucket	128:1	1	64:1	2
255 HP All Purpose Cleaner	320101	Bottle	32:1	4	64:1	2
300 Non-Acid Bathroom Cleaner	30400	Bottle	16:1	8	32:1	4
315 Foaming Acid Disinfectant	170500	Bucket	32:1	4	12:1	10.7
320 Disinfectant Bathroom Cleaner	170200	Bucket	32:1	4	16:1	8
330 Fresh Mist Liquid Enzymes	160115	Bucket	64:1	2	26:1	4.9
343 WAXIE-Green Restroom Cleaner	30120	Bottle	30:1	4.25	64:1	2
443 WAXIE-Green Citrus HydroxyClean	410061	Bucket	16:1	8	8:1	16
543 WAXIE-Green Glass & Surface Cleaner	950110	Bottle	60:1	2.1	128:1	1
620 Clean Mist Air Freshener	160109	Bottle	16:1	8	32:1	4
630 Fresh Mist Air Freshener	160108	Bottle	16:1	8	32:1	4
700 Disinfectant Cleaner	170300	Bucket	128:1	1	64:1	2
710 Multi-Purpose Disinfectant	170401	Bucket	256:1	.5	128:1	1
764 Lemon Quat Disinfectant Cleaner	170700	Bucket	64:1	2	26:1	4.9
843 Encapsulating Carpet Extraction	070664	Bucket	64:1	2	32:1	4
844 Encapsulating Carpet Spin Bonnet	070666	Bucket	8:1	16	13:8	9.3
845 Encapsulating Carpet Pre-Spray	070665	Bucket	16:1	8	10:1	12.8
846 Fiber Care	070051	Bucket	64:1	2	32:1	4
910 Final FS No Rinse Sanitizer	170831	Bucket	512:1	.25	183:1	0.7
920 Brk-Away FS Cleaner/Degreaser	410400	Bucket	32:1	4	13:1	9.8
930 Chlorinated FS Degreaser	410900	Bucket	16:1	8	8:1	16
943 WAXIE-Green Dish Kleenz	530515	Bucket	512:1	.25	256:1	0.5

PARTS LIST



No.	Part No.	Description
1	66-257-5	Bucket Fill Water Valve Assy.
2	66-257-6	Bottle Fill Water Valve Assy.
3	66-254-2	Bottle Fill Activation Lever Assy.
4	56-46	Vent Assembly
5	10-59-2	Selector Valve Assy.
6	10-60	Docking Station Assy.
7	10-61	Chemical Container Riser
8	10-58	Drip Tray
9	44-3-8FCO	8Ft. Water Inlet Hose
10	16-30	Action Gap
11	61-22-7	1 GPM Proportioner(Action Gap)w/ barb
	61-32MAG	1 GPM Air Gap w/ barb
12	163CH-MB	2.5 GPM Proportioner(Action Gap)w/ barb
	64-45-MAG	2.5 GPM Air Gap w/ Barb
13	66-98-13	Braided PVC Hose
14	100-12	8' PVC Chemical Tubing
15	98-36-6	Blue Tubing
16	98-36-9	Clear Tubing
17	98-42-4	Bottle Fill Tube
18	66-255-2	Remote Gun Assy.

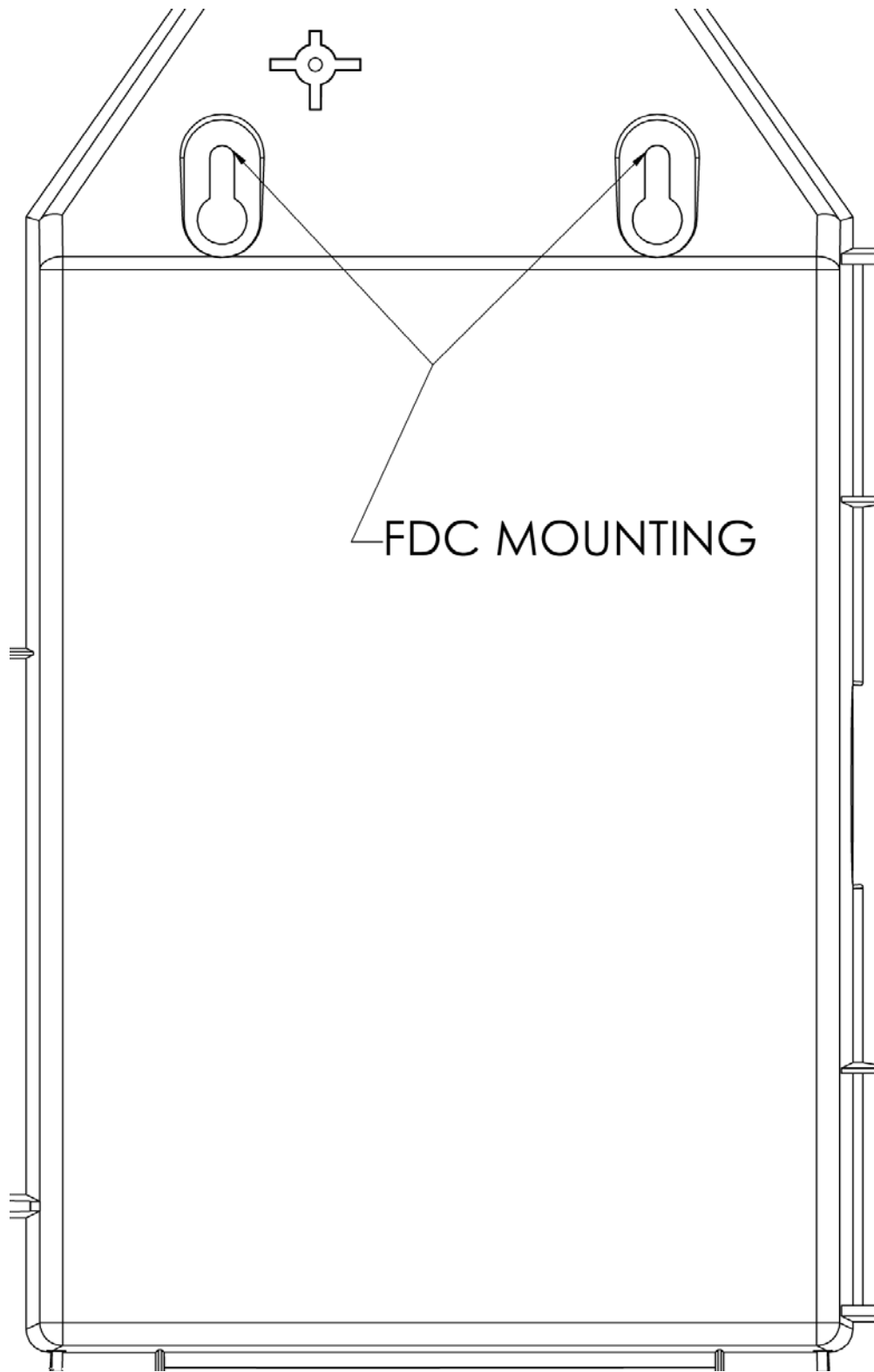
WARRANTY

Merchandise Returns

No Merchandise will be returned for credit without Waxie written permission. Returned merchandise authorization number is required in advance of return.

Product Warranty

WAXIE Sanitary Supply products are warranted against defective material and workmanship under normal use and service for one year from the date of manufacture. This limited warranty does not apply to any products that have a normal life shorter than one year or failure and damage caused by chemicals, corrosion, physical abuse, or misapplication. Rubber and synthetic rubber parts such as "o"-rings, diaphragms, PVC tubing, and gaskets are considered expendable and are not covered under warranty. This warranty is extended only to the original buyer of products. If products are altered or repaired without prior approval, this warranty is void. Defective units or parts should be returned to the nearest WAXIE division. If inspection shows them to be defective, they will be repaired or replaced without charge. WAXIE assumes no liability for damages. Return merchandise authorization number must be granted in advance of returned units for repair or replacement (See "Merchandise Returns" above).



ASSE International
FOR PLUMBING AND SANITARY RESEARCH



This certifies: Dema Engineering has listed Chemical Dispensing Systems

Models:

16-30 - Type B

SL1 - Type B

Were tested by CSA International -Cleveland and have met the requirements as stated by ASSE Standard 1055 - 2009, are in compliance to the current edition of the Seal Control Board Procedures and have been granted permission by the Seal Control Board to display the ASSE Seal on 01/14/2002, amended 03/16/2010, 03/07/2013.

This authorization is valid until 01/31/2014 and is renewable annually or until such time as the standard has been revised or the product/s is found not in compliance. Display of the ASSE Seal is not a product endorsement.

ASSE International has created the Seal Listing Program to encourage improvements in plumbing products and systems in the interests of greater protection of public health and safety.

ASSE Record Number: 916



James C. Stanley
ASSE Seal Control Board Chairperson