



SOLUTION STATION

Instruction Manual



WAXIE Sanitary Supply
9353 WAXIE Way
San Diego, CA 92123

Phone: 800.995.4466 www.waxie.com

TABLE OF CONTENTS

Unpacking Instructions.....	3
Disclaimer.....	3
Warranty.....	3
Introduction.....	4
Theory of Operation.....	4
Specifications.....	5
System Components.....	6
Chemical Selector Positioning.....	7
Installation and Assembly.....	8
Concentrates Dilution Chart.....	11
Servicing.....	12
Maintenance.....	18
Troubleshooting.....	18
Parts List & Diagrams.....	19

UNPACKING INSTRUCTIONS

The WAXIE Solution Station is carefully packaged at the factory to minimize the possibility of damage during shipping. Inspect the box for external signs of damage or mishandling. Inspect the contents for damage. If there is visible damage to the equipment upon receipt, inform the shipping company and WAXIE Sanitary Supply immediately.

DISCLAIMER

WAXIE Sanitary Supply does not accept responsibility for the mishandling, misuse or non-performance of the described item when used for purposes other than those specified in the instructions. For hazardous materials information, consult SDS or your WAXIE Sanitary Maintenance Consultant.

WARRANTY

The WAXIE Solution Station is warranted against defects in material and workmanship for a period of ONE (1) year. Warranty applies only to replacement or repair of such parts when reported to WAXIE and found to be defective upon factory authorized inspection. Parts such as 'O' rings, diaphragms and tubing are considered expendable and are not covered under warranty. Warranty does not cover liability resulting from performance of this equipment nor the labor to replace this equipment. Product abuse or misuse voids the warranty.

INTRODUCTION

The WAXIE Solution Station is a cabinet dispenser chemical proportioning system designed to meet the needs of any institutional or industrial cleaning application.

The Solution Station provides two means of activating the proportioner. For unique one-hand filling of spray bottles, a bottle actuator attaches over the outside of the water valve body. To fill buckets, the Solution Station features a one-hand bucket fill gun with a remote on/off trigger that allows for fingertip dispensing control right at the point of delivery.

A Flex Gap or Aire Gap type backflow device is offered to meet plumbing code requirements of any city, state or country.

THEORY OF OPERATION

The Solution Station will activate and dispense chemicals at the proper dilution rate when the bucket trigger or bottle actuator is pressed and will stop when released.

- Bucket gun trigger activated: The one-hand bucket fill gun has a remote on/off trigger that allows for fingertip dispensing control right at the point of delivery.
- Bottle activated: Allows the operator to insert the spray bottle over the preformed fill tube and push in the actuator arm to start the dispensing process, much like a self-serve beverage machine.
- 4 Solution: Allows from one to four chemicals to be dispensed, each with its own dilution rate. The operator turns the dial selector knob to the chemical to be dispensed and activates the unit using the bottle actuator or bucket trigger.

SPECIFICATIONS

WAXIE Solution Station



Dimensions:	H 26" x W 23" x D 7.75"
Weight	16 Lbs.
Maximum Water Pressure	125 PSI (8.6 Bar)
Minimum Water Pressure	25 PSI (1.7 Bar)
Optimum Water Pressure	30 to 60 PSI (2 to 4 Bar)
Maximum Water Temperature	140° F (60° C)
Materials of Construction::	
Case/cover	ABS
Flex Gap/ Aire Gap	Polypropylene
O' rings	Viton
Water Valve	Acetal
Water Inlet	Brass
Chemical Tubing	Vinyl
Chemical Compatibility	Contact Factory for compatibility of all parts.
Vacuum:	28 inches (.93 Bar) at 50 PSI (3.4 Bar)

Regulatory Approvals:



ASSE



IAPMO



CSA

WAXIE Solution Station

System Components



Front View (Doors Closed)

- Bucket fill chemical selector
- Bottle fill chemical selector
- Bottle fill actuator arm
- Bottle fill tube
- Drip tray
- Drain tube
- Bucket trigger fill hose



Front View (Doors Open)

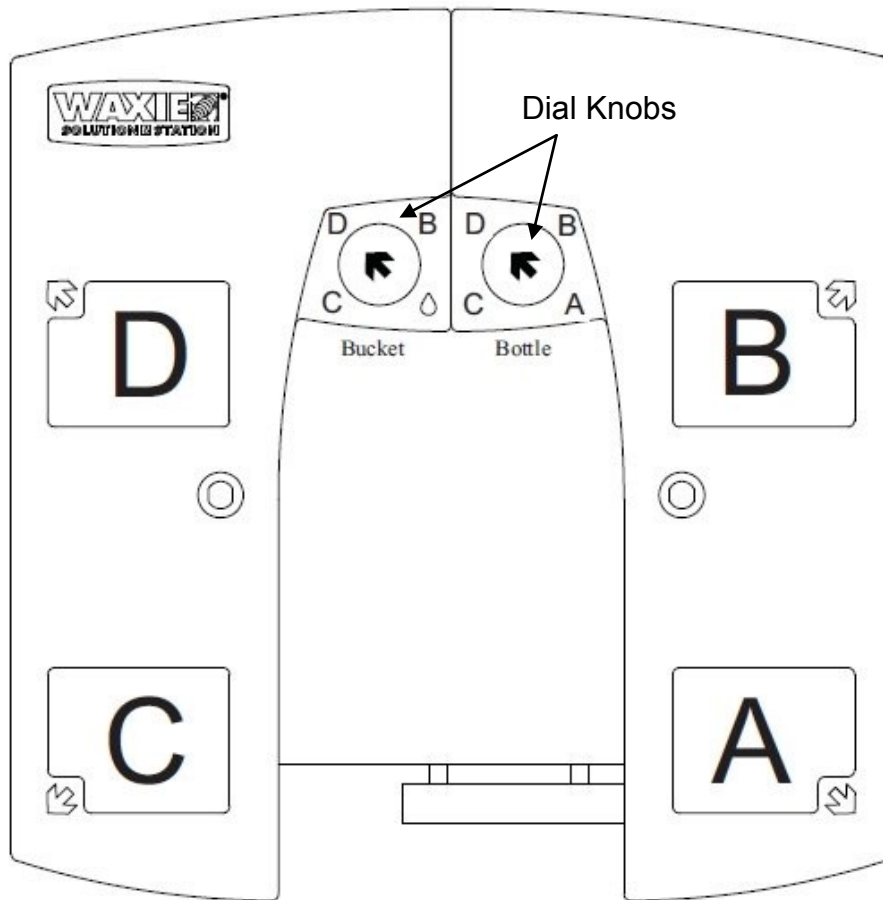
- Bottle cap pickup tubes (4)
- Chemical bottle compartments (4)
- Water hose
- Water 'Y' fitting



Rear View

- Built in joggle bracket for quick and easy mounting
- Easy to carry handle
- Pre-attached flow regulator behind the cabinet
- Bucket fill hose run through to back to prevent hose from blocking front doors.
- Additional mounting holes to secure cabinet to wall.

CHEMICAL SELECTOR POSITIONING DIAGRAM



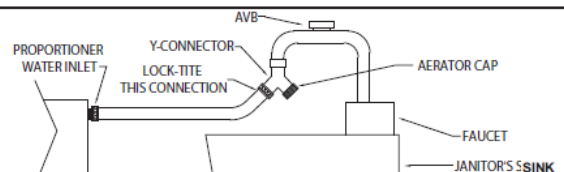
Operation:

To select a chemical to be dispensed for bottle fill or bucket fill, simply turn the dial knob with arrow pointing to the corresponding arrow on cabinet.

IMPORTANT:

If changing to a different chemical in the same shelf position, make sure to flush out both the bottle fill and bucket fill assembly with water before attaching bottle cap to the new chemical product. Turn off water at shut-off valve when not in use.

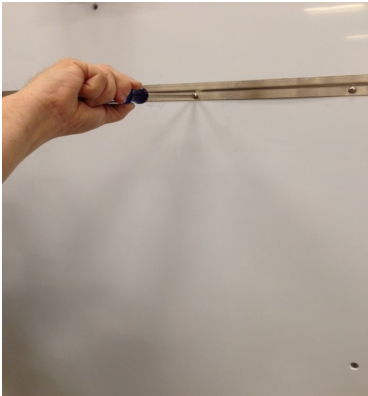
Important Note: If proportioner is connected to a janitor's sink with an atmospheric vacuum breaker, a special connection kit is required by A.S.S.E. specification 1055. See drawing below. Failure to use this kit, or equivalent connection means, will invalidate the A.S.S.E. and I.A.P.M.O. (UPC) certification. Specify P/N 7600187 when ordering the kit.



INSTALLATION AND ASSEMBLY

Solution Station Cabinet Dispenser

Follow these steps to install the Solution Station Cabinet Dispenser:



Step 1. Secure the wall bracket to the wall with the appropriate hardware.



Step 2. Slide the cabinet onto the wall bracket.



Step 3. Secure the cabinet to the wall by installing two screws into the holes provided inside the bottom of the cabinet.

INSTALLATION AND ASSEMBLY

Solution Station Cabinet Dispenser

Follow these steps to install the Solution Station Cabinet Dispenser (Contd.):



Step 4. Attach the water Y fitting as shown, then attach to the water source.



Step 5. Attach the 3/8" drain tube to the bottom of the drip tray. Optional red cap (included in the accessory kit) can be attached to the drain plug if drain tube is not being used.



Step 6. Chemical tubes and bottle caps are pre-installed for 4 bottle dilution and 3 bucket dilution capability.

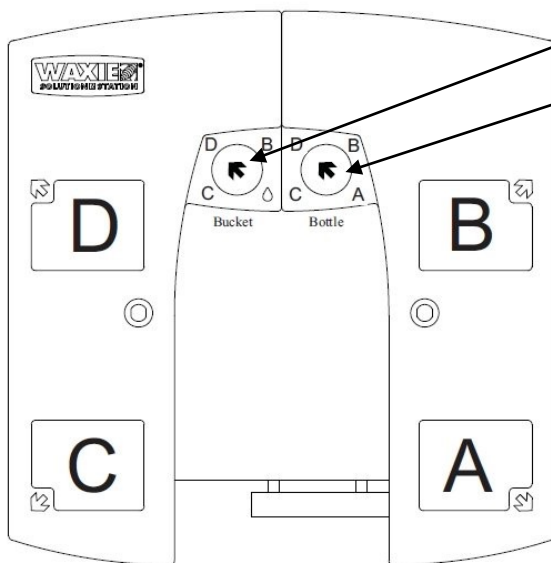
INSTALLATION AND ASSEMBLY

Solution Station Cabinet Dispenser

Follow these steps to install the Solution Station Cabinet Dispenser (Contd.):



Step 7. Connect bottle caps onto the chemical containers. Place containers into cabinet.



Bucket fill selector knob

Bottle fill selector knob

Step 8. Turn bottle fill knob with white arrow so that it points to the corresponding arrow on the cabinet container you desire and prime chemical line. Repeat same steps for the other 3 positions. Do the same on the bucket fill also.

NOTE: Position A on bucket fill is water only.

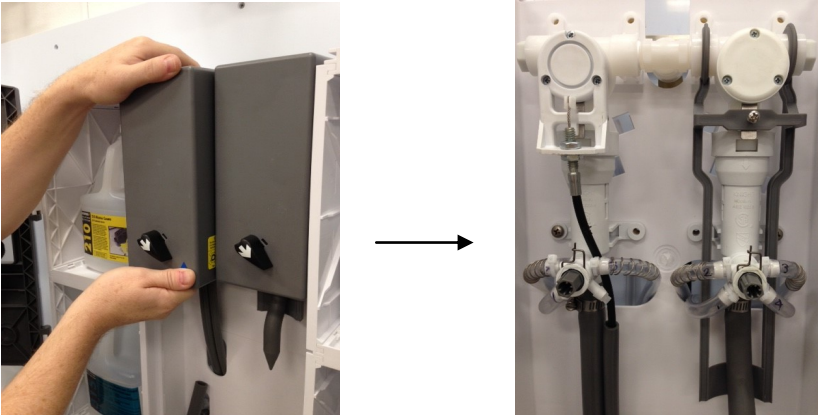
WAXIE SOLUTION STATION CONCENTRATES DILUTION CHART

Description	Item	PRIMARY SELECTOR POSITION			Secondary Selector Position		
		Ratio	Ratio Convert	Application	Ratio	Ratio Convert	Application
110 HD Degreaser	410098	32/1	4.0	BOTTLE	73/1	1.8	BUCKET
120 XHD Degreaser	410099	32/1	4.2	BOTTLE	73/1	1.8	BUCKET
143 Waxie-Green Cleaner/Degreaser	410056	64/1	2.0	BUCKET	32/1	4.0	BOTTLE
200 General Purpose Cleaner	320100	32/1	4.0	BOTTLE	64/1	2.0	BUCKET
210 Neutral Cleaner	320200	128/1	1.0	BUCKET	64/1	2.0	BOTTLE
230 Floor Stripper	320806	12/1	10.7	BUCKET	8/1	16.0	BOTTLE
243 Waxie-Green Neutral Cleaner	320007	128/1	1.0	BUCKET	64/1	2.0	BOTTLE
255 HP All Purpose Cleaner	320101	32/1	4.0	BOTTLE	64/1	2.0	BUCKET
300 Non-Acid Bathroom Cleaner	030400	16/1	8.0	BOTTLE	36/1	3.6	BUCKET
315 Foaming Acid Disinfectant	170500	32/1	4.0	BUCKET	12/1	10.7	BOTTLE
320 Disinfectant Bathroom Cleaner	170200	32/1	4.0	BUCKET	16/1	8.0	BOTTLE
330 Fresh Mist Liquid Enzymes	160115	64/1	2.0	BUCKET	26/1	5.0	BOTTLE
343 Waxie-Green Restroom Cleaner	030120	26/1	5.0	BOTTLE	64/1	2.0	BUCKET
443 Waxie-Green Citrus HydroxyClean	410061	16/1	8.0	BUCKET	8/1	16.0	BOTTLE
543 Waxie-Green Glass & Surface Cleaner	950110	60/1	2.1	BOTTLE	128/1	1.0	BUCKET
620 Clean Mist Air Freshner	160109	16/1	8.0	BOTTLE	32/1	4.0	BUCKET
630 Fresh Mist Air Freshner	160108	16/1	8.0	BOTTLE	32/1	4.0	BUCKET
700 Disinfectant Cleaner	170300	128/1	1.0	BUCKET	64/1	2.0	BOTTLE
710 Multi-Purpose Disinfectant	170401	256/1	0.5	BUCKET	128/1	1.0	BOTTLE
764 Lemon Quat Disinfectant Cleaner	170700	64/1	2.0	BUCKET	26/1	5.0	BOTTLE
843 Encapsulating Carpet Extraction	070664	64/1	2.0	BUCKET	32/1	4.0	BOTTLE
844 Encapsulating Carpet Spin Bonnet	070666	8/1	16.0	BUCKET	13/1	10.0	BOTTLE
845 Encapsulating Carpet Pre-Spray	070665	16/1	8.0	BUCKET	10/1	13.0	BOTTLE
846 Fiber Care	070051	64/1	2.0	BUCKET	32/1	4.0	BOTTLE
910 Finale FS No Rinse Sanitizer	170831	512/1	0.3	BUCKET	183/1	0.7	BOTTLE
920 Brk-Away FS Cleaner/Degreaser	410400	32/1	4.0	BUCKET	13/1	10.0	BOTTLE
930 Chlorinated FS Degreaser	410900	16/1	8.0	BUCKET	8/1	16.0	BOTTLE
943 Waxie-Green Dish Kleenz	530515	427/1	0.3	BUCKET	160/1	0.8	BOTTLE

SERVICING

Servicing the Bucket Fill Gun Assembly

1. Remove the cover by gently pulling at the bottom and the top of the cover. Repeat for the second cover.



2. Unscrew the three screws securing the diaphragm cover.



NOTE

The whole bucket fill assembly can be replaced or individual components of the bucket fill gun itself can be replaced.

3. Remove the diaphragm cover, and retain the red rubber diaphragm arm and the metal spring.



SERVICING

Servicing the Bucket Fill Gun Assembly

4. Loosen the hose clamp



5. Pull the bucket fill hose off and remove the entire assembly from the unit. The chemical lines remain connected.



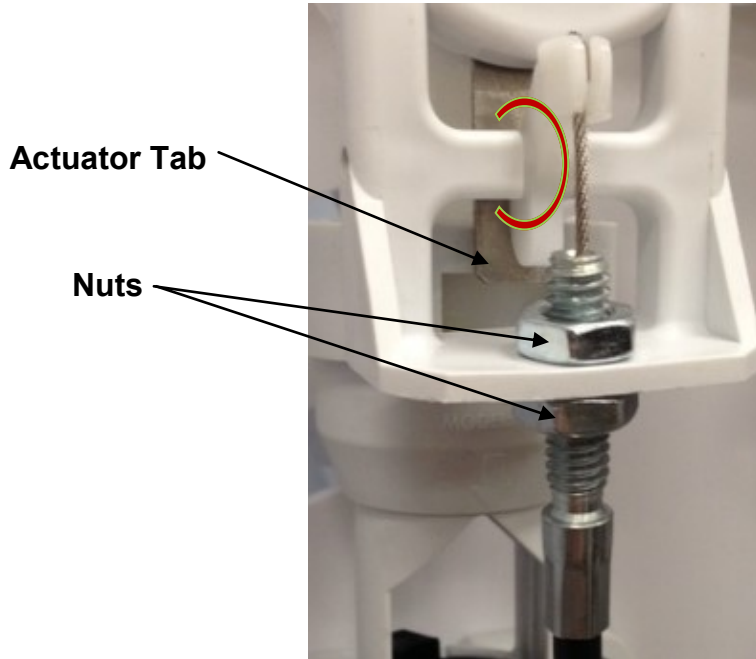
6. The entire assembly can be replaced.



SERVICING

Adjusting the Bucket Fill Gun Assembly

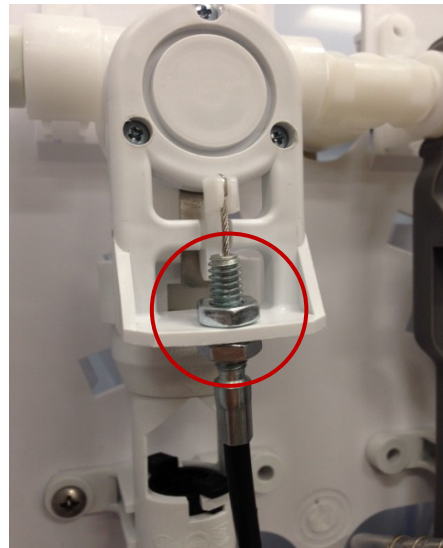
The bucket fill gun trigger assembly is pre-adjusted at the factory to make proper contact with the actuator tab on the valve assembly. If the assembly needs adjustment, refer to the images and adjustments below:



For more tension and contact with actuator tab, adjust the nuts up on the threads as shown below:



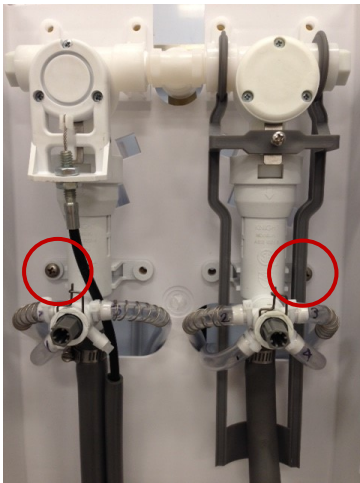
For less tension and contact with actuator tab, adjust the nuts down on the threads as shown below:



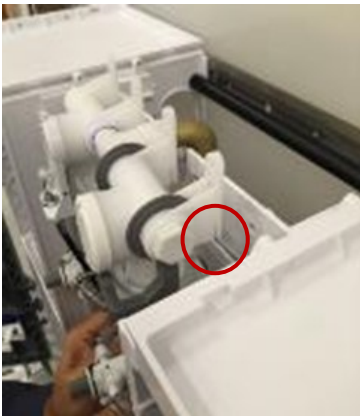
SERVICING

Servicing the Backflow Preventer Assembly

The cabinet design is geared toward a service friendly interface. Internal components can be accessed with a few steps while the chemical lines remain connected.



1. Unscrew the two screws that secure the engine to the cabinet. The bucket fill and bottle fill discharge assemblies remain connected.



2. Lift the engine up off the joggle bracket. The water line remains connected.



3. Snap off the bottle fill trigger lever.

SERVICING

Servicing the Backflow Preventer Assembly



4. Grasp the diaphragm and the backflow preventer body and rotate a quarter twist to separate.



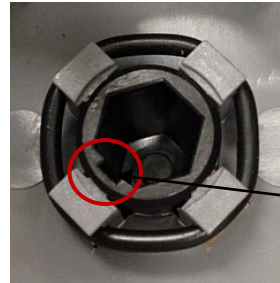
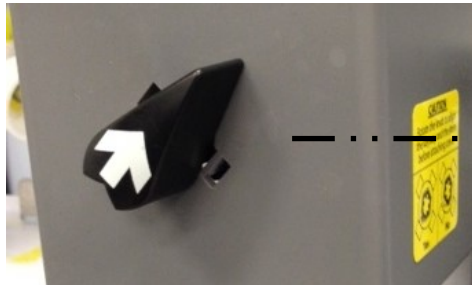
5. The chemical lines stay connected and you have access to the backflow preventer assembly.

SERVICING

Reattaching the Cover (s)

Reattaching the cover on the bucket fill assembly (and the bottle fill assembly) requires alignment of the selector knob on the cover with the selector valve on the dial 4 assembly.

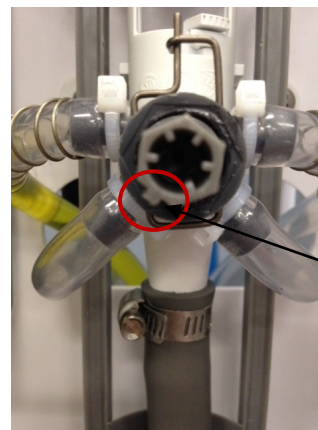
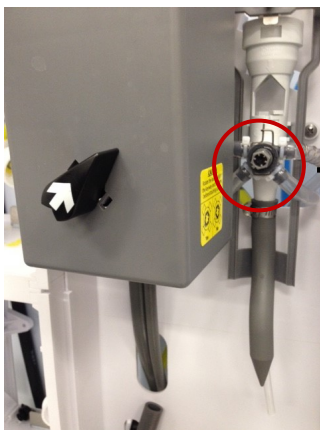
The cover selector knob is slotted.



Inside cover view of cover selector knob.

Slot

The selector valve shaft is keyed to slide into the selector knob when the cover is replaced.



Key



When replacing the cover, ensure that the slot in the selector knob aligns with the key on the selector valve.

Snap cover back onto the unit and repeat for the second cover.

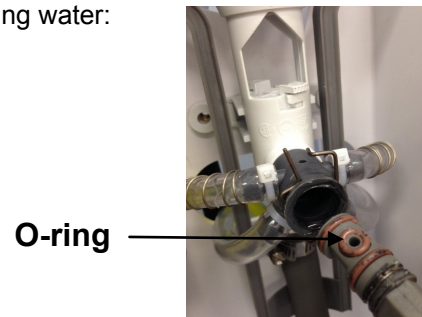
MAINTENANCE

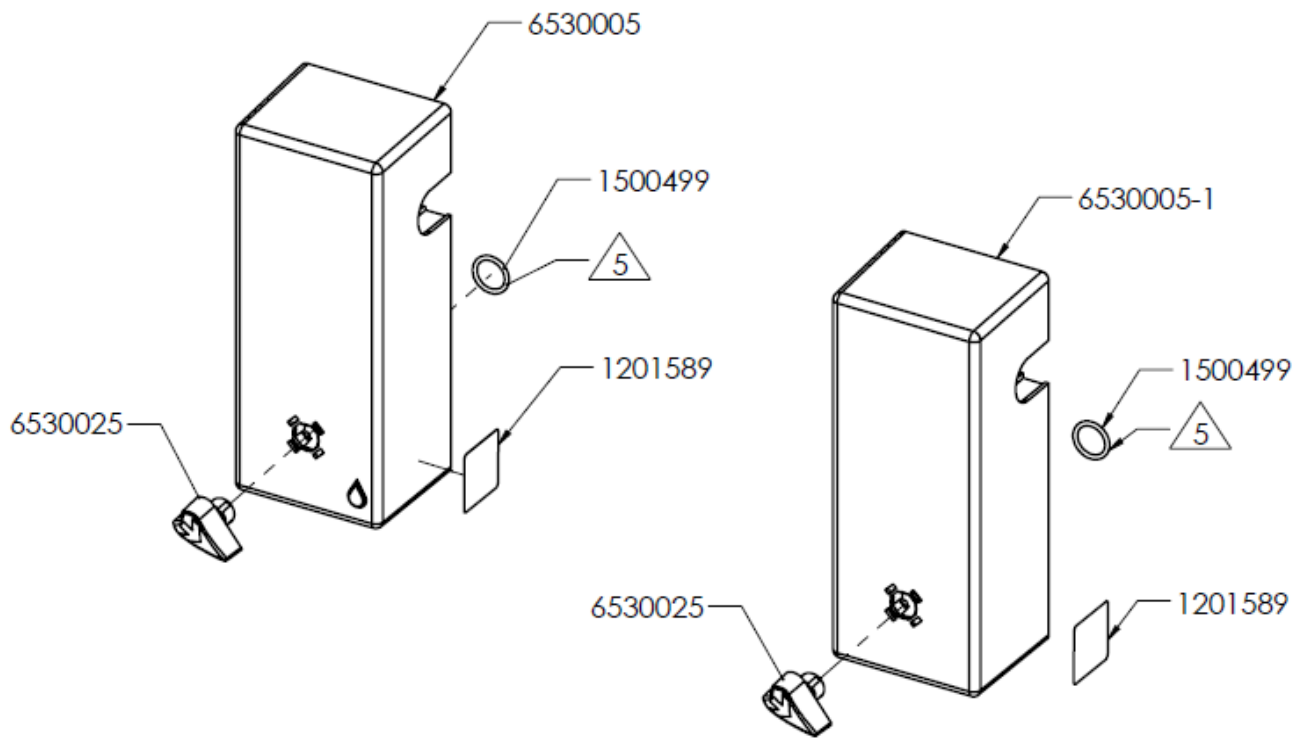
Periodically check the following:

1. Ensure the supply line is keeping prime. If not, replace the bottle cap assembly.
2. Bottle and bucket activation for proper operation.
3. Solution cabinet drip tray assembly should be flushed with water periodically.

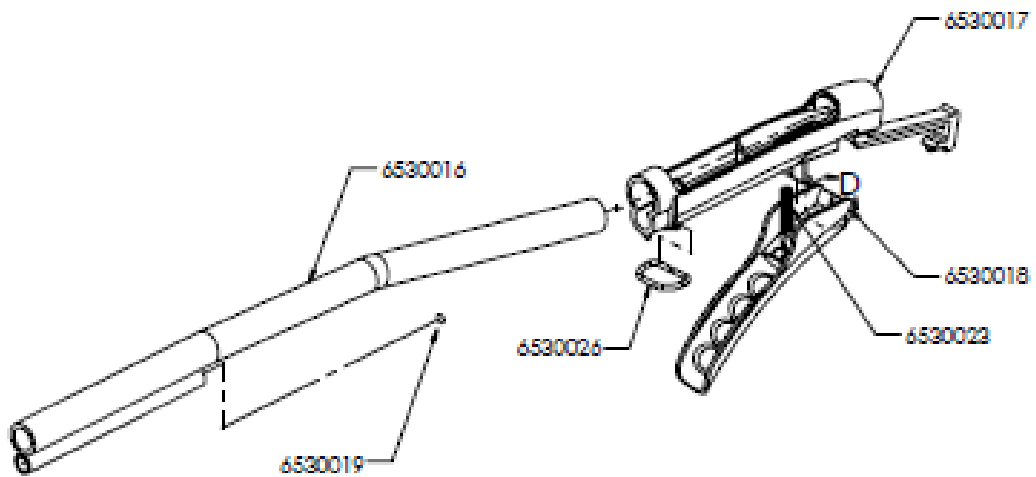
TROUBLESHOOTING

1. Dispenser will not draw chemical:
 - A. Check water pressure for 30 to 60 PSI.
 - B. Check or change bottle cap.
2. Mixed chemical concentration is too weak:
 - A. Check water pressure for a minimum of 25 PSI of flow pressure.
3. Supply line loses chemical prime:
 - A. Check or change bottle cap.
4. Dial 4 will not draw chemical:
 - A. Check condition of O-ring on dial selector valve.
 - B. Ensure dial 'clicks' (detents) to selected product.
5. Low water flow:
 - A. Check for sediment in the water hose screen washer.
 - B. Check water pressure.
6. Bottle activator on cabinet will not activate valve:
 - A. Remove front cover and adjust calibration screw until flow is achieved.
7. Bucket fill activator on cabinet will not activate valve:
 - A. Remove front cover and adjust two nuts at the valve assembly.
(see 'adjusting the bucket fill gun assembly' in Servicing section.)
8. Aire-Gap version cabinet dispenser is spraying a fan pattern or dripping water:
 - A. Clean mineral deposits per Aire-Gap nozzle and screen.
9. Dial 4 will not draw chemical:
 - A. Check condition of O-ring on dial selector knob.
 - B. Ensure dial 'clicks' to selected product.

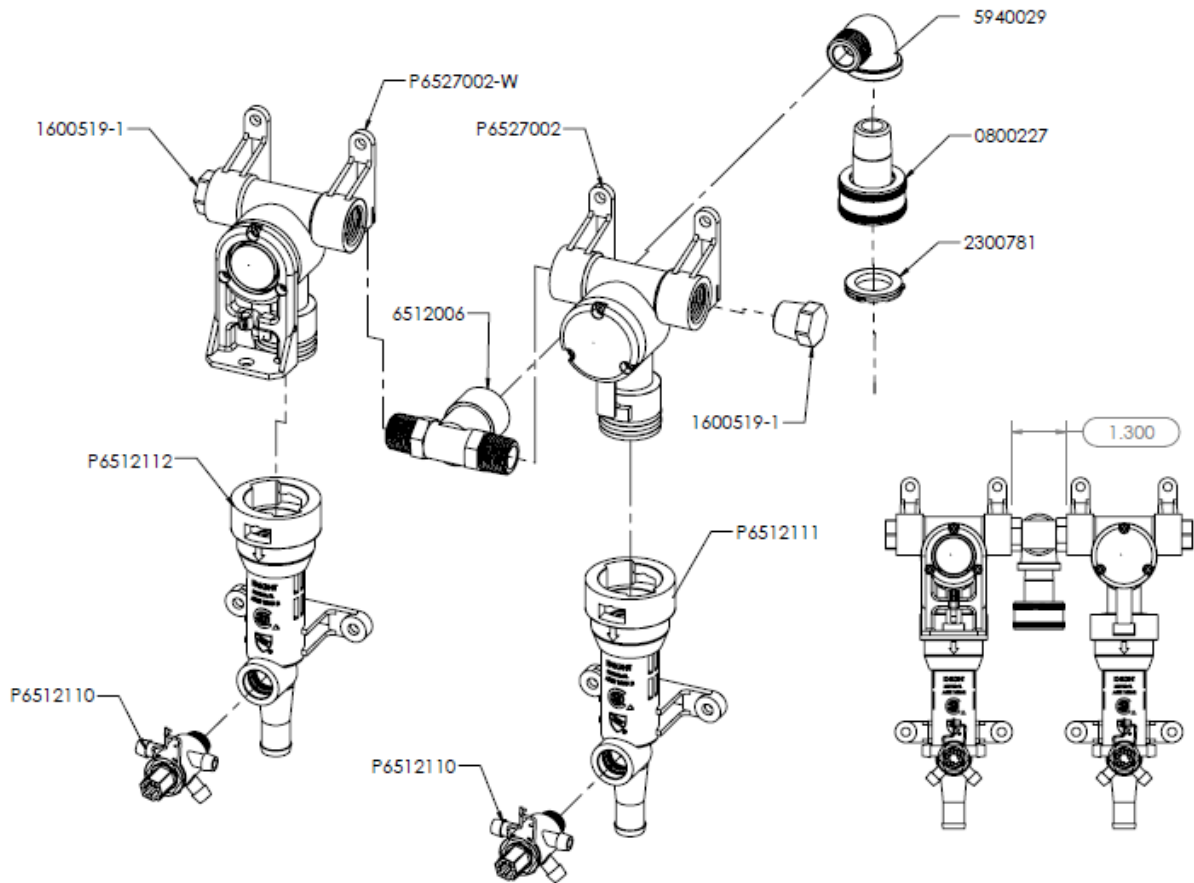




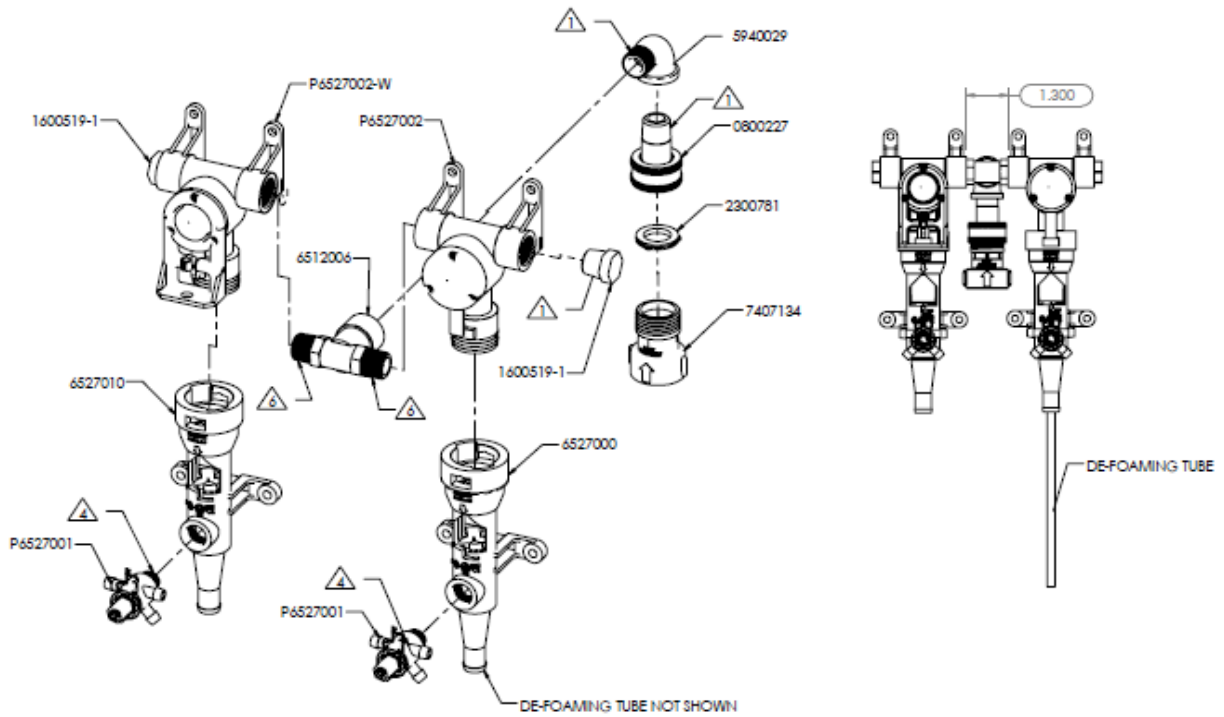
COVER ASSEMBLY



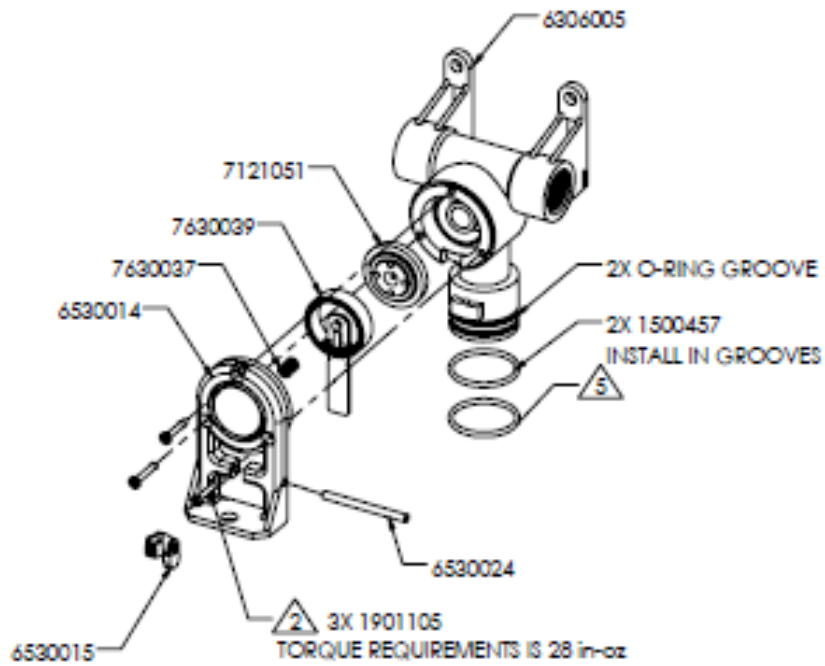
P6530040 - PISTOL ASSEMBLY, BUCKET FILL



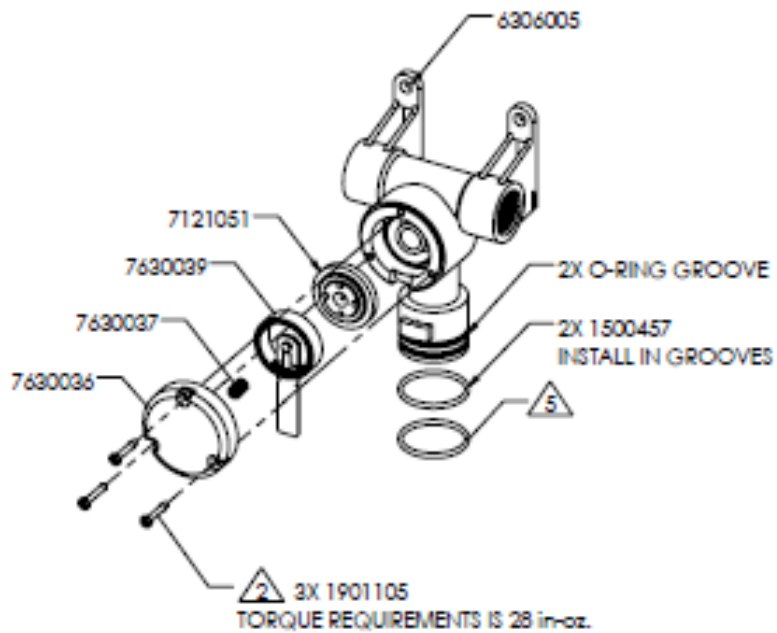
P6530030-F VALVE ASSEMBLY (FLEX GAP)



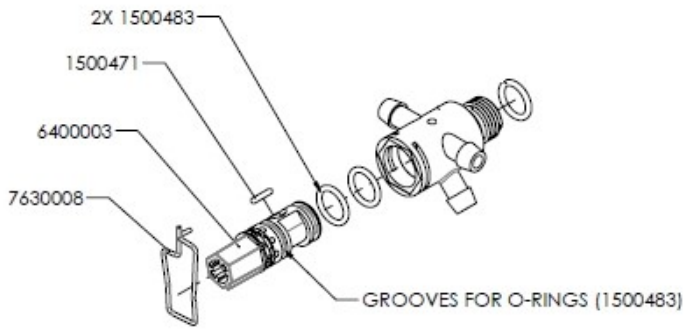
P6530030-A VALVE ASSEMBLY (AIRE-GAP)



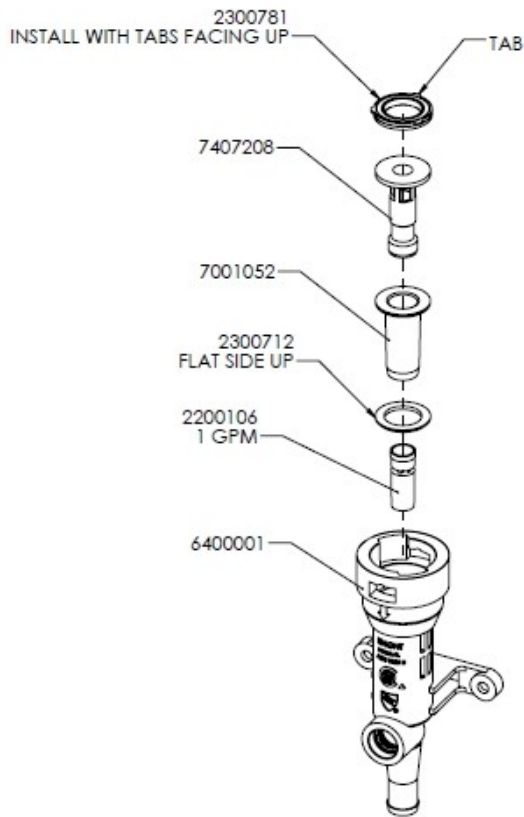
P6527002-W VALVE ASSEMBLY BUCKET



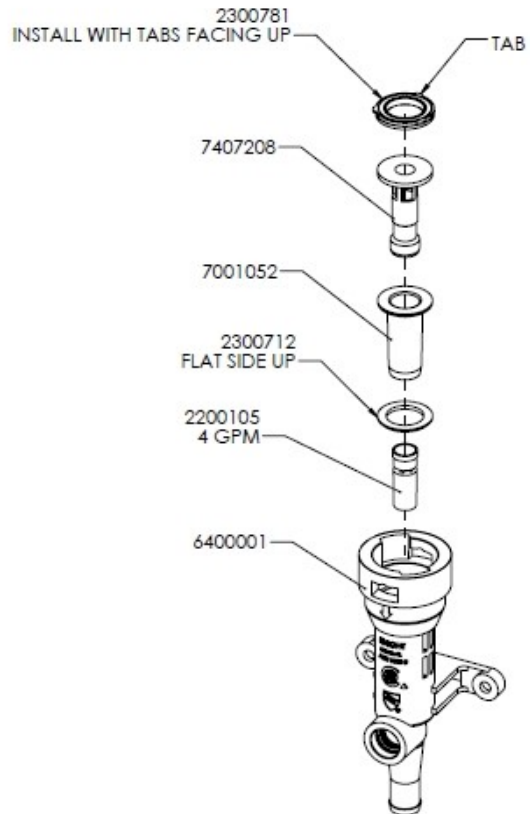
P6527002 VALVE ASSEMBLY BOTTLE



P6512110 DIAL 4 ASSEMBLY



P6512111
1 GPM FLEX-GAP HOUSING ASSEMBLY



P6512112
4 GPM FLEX-GAP HOUSING ASSEMBLY



WAXIE Sanitary Supply
9353 WAXIE Way
San Diego, CA 92123

Phone: 800.995.4466 www.waxie.com

PN 0901205 Rev. A 2-1-17